

AIP KOSOVO

Aeronautical Information Service
Pristina International Airport
Vrellë-Lipjan

**AIP AIRAC
AMDT**

01/2017

09 NOV 2017

TEL: +381 38 59 58 313

FAX: +381 38 59 58 214

AFTN: BKPRZPZX

E-mail: ais@rks-gov.net

1. Amendment content:

- 1.1 ENR 2.1 CLASS OF AIRSPACE, CTR and CTA's updated, F Class removed
- 1.2 ENR 4.3 Name-Code Designators for significant points updated
- 1.3 BKPR AD 2.17 ATS AIRSPACE, Pristina CTR updated
- 1.4 BKPR AD 2.24 CHARTS RELATED TO THE AERODROME, ATC Surveillance Minimum Altitude Chart BKPR 2.24.8.1-1, inserted
- 1.5 BKPR AD 2.24.6.1 AREA CHART – ICAO, updated

2. Insert / remove the pages as shown in list below:

Insert the following new page

| | |
|-----------------|-----------|
| GEN 0.4-1/2 | 09 NOV 17 |
| ENR 2.1-1/2 | 09 NOV 17 |
| ENR 2.1-3/4 | 09 NOV 17 |
| ENR 4.3-1/2 | 09 NOV 17 |
| AD 2.1-5/6 | 09 NOV 17 |
| AD 2.1-19/20 | 09 NOV 17 |
| AD 2.24.6.1-1/2 | 09 NOV 17 |
| AD 2.24.8.1-1/2 | 09 NOV 17 |

Remove the following old page

| | |
|-----------------|-----------|
| GEN 0.4-1/2 | 27 APR 17 |
| ENR 2.1-1/2 | 03 APR 17 |
| ENR 2.1-3/4 | 11 DEC 14 |
| ENR 4.3-1/2 | 18 DEC 08 |
| AD 2.1-5/6 | 15 SEP 16 |
| AD 2.1-19/20 | 24 JUL 14 |
| AD 2.24.6.1-1/2 | 11 DEC 14 |

3. Please record entry of Amendment on page GEN 0.2-1

GEN 0.4 CHECKLIST OF AIP PAGES

| <i>Page</i> | <i>Date</i> | <i>Page</i> | <i>Date</i> | <i>Page</i> | <i>Date</i> |
|----------------------------|-------------|-------------|-------------|--------------------------------|-------------|
| PART1-GENERAL (GEN) | | | | GEN4 | |
| GEN0 | | GEN2 | | 4.1-1 | 01 NOV 12 |
| 0.1-1 | 06 AUG 15 | 2.1-1 | 18 JUN 09 | 4.1-2 | 01 NOV 12 |
| 0.1-2 | 06 AUG 15 | 2.1-2 | 18 JUN 09 | 4.2-1 | 02 FEB 17 |
| 0.1-3 | 18 DEC 08 | 2.2-1 | 02 DEC 10 | 4.2-2 | 02 FEB 17 |
| 0.1-4 | 18 DEC 08 | 2.2-2 | 02 DEC 10 | | |
| 0.2-1 | 18 DEC 08 | 2.2-3 | 01 NOV 12 | PART 2 - EN-ROUTE (ENR) | |
| 0.2-2 | 18 DEC 08 | 2.2-4 | 01 NOV 12 | ENR0 | |
| 0.3-1 | 14 JUN 12 | 2.2-5 | 18 JUN 09 | 0.6-1 | 03 APR 14 |
| 0.3-2 | 14 JUN 12 | 2.2-6 | 18 JUN 09 | 0.6-2 | 03 APR 14 |
| 0.4-1 | 09 NOV 17 | 2.3-1 | 18 DEC 08 | ENR1 | |
| 0.4-2 | 09 NOV 17 | 2.3-2 | 18 DEC 08 | 1.1-1 | 18 DEC 08 |
| 0.5-1 | 18 DEC 08 | 2.3-3 | 18 DEC 08 | 1.1-2 | 18 DEC 08 |
| 0.5-2 | 18 DEC 08 | 2.3-4 | 18 DEC 08 | 1.2-1 | 03 APR 14 |
| 0.6-1 | 29 JAN 09 | 2.3-5 | 18 DEC 08 | 1.2-2 | 03 APR 14 |
| 0.6-2 | 29 JAN 09 | 2.3-6 | 18 DEC 08 | 1.3-1 | 18 DEC 08 |
| GEN1 | | 2.3-7 | 18 DEC 08 | 1.3-2 | 18 DEC 08 |
| 1.1-1 | 06 AUG 15 | 2.3-8 | 18 DEC 08 | 1.4-1 | 18 DEC 08 |
| 1.1-2 | 06 AUG 15 | 2.3-9 | 18 DEC 08 | 1.4-2 | 18 DEC 08 |
| 1.2-1 | 12 JUN 14 | 2.3-10 | 18 DEC 08 | 1.5-1 | 18 DEC 08 |
| 1.2-2 | 12 JUN 14 | 2.4-1 | 18 DEC 08 | 1.5-2 | 18 DEC 08 |
| 1.3-1 | 11 JUN 15 | 2.4-2 | 18 DEC 08 | 1.6-1 | 24 JUL 14 |
| 1.3-2 | 11 JUN 15 | 2.5-1 | 18 DEC 08 | 1.6-2 | 24 JUL 14 |
| 1.3-3 | 11 JUN 15 | 2.5-2 | 18 DEC 08 | 1.6-3 | 18 DEC 08 |
| 1.3-4 | 11 JUN 15 | 2.6-1 | 18 DEC 08 | 1.6-4 | 18 DEC 08 |
| 1.3-5 | 11 JUN 15 | 2.6-2 | 18 DEC 08 | 1.6-5 | 06 AUG 15 |
| 1.3-6 | 11 JUN 15 | 2.6-3 | 18 DEC 08 | 1.6-6 | 06 AUG 15 |
| 1.4-1 | 08 AUG 13 | 2.6-4 | 18 DEC 08 | 1.7-1 | 18 DEC 08 |
| 1.4-2 | 08 AUG 13 | 2.7-1 | 18 DEC 08 | 1.7-2 | 18 DEC 08 |
| 1.5-1 | 16 APR 15 | 2.7-2 | 18 DEC 08 | 1.8-1 | 18 DEC 08 |
| 1.5-2 | 16 APR 15 | GEN3 | | 1.8-2 | 18 DEC 08 |
| 1.6-1 | 08 AUG 13 | 3.1-1 | 06 AUG 15 | 1.8-3 | 18 DEC 08 |
| 1.6-2 | 08 AUG 13 | 3.1-2 | 06 AUG 15 | 1.8-4 | 18 DEC 08 |
| 1.6-3 | 18 NOV 16 | 3.1-3 | 27 APR 17 | 1.8-5 | 18 DEC 08 |
| 1.6-4 | 18 NOV 16 | 3.1-4 | 27 APR 17 | 1.8-6 | 18 DEC 08 |
| 1.7-1 | 02 FEB 17 | 3.2-1 | 06 AUG 15 | 1.8-7 | 18 DEC 08 |
| 1.7-2 | 02 FEB 17 | 3.2-2 | 06 AUG 15 | 1.8-8 | 18 DEC 08 |
| 1.7-3 | 27 APR 17 | 3.2-3 | 03 APR 14 | 1.8-9 | 18 DEC 08 |
| 1.7-4 | 27 APR 17 | 3.2-4 | 03 APR 14 | 1.8-10 | 18 DEC 08 |
| | | 3.2-5 | 29 JAN 09 | 1.8-11 | 18 DEC 08 |
| | | 3.2-6 | 29 JAN 09 | 1.8-12 | 18 DEC 08 |
| | | 3.3-1 | 06 AUG 15 | 1.8-13 | 18 DEC 08 |
| | | 3.3-2 | 06 AUG 15 | 1.8-14 | 18 DEC 08 |
| | | 3.4-1 | 18 NOV 10 | 1.8-15 | 18 DEC 08 |
| | | 3.4-2 | 18 NOV 10 | 1.8-16 | 18 DEC 08 |
| | | 3.5-1 | 23 JUN 16 | 1.8-17 | 18 DEC 08 |
| | | 3.5-2 | 23 JUN 16 | 1.8-18 | 18 DEC 08 |
| | | 3.6-1 | 18 DEC 08 | 1.8-19 | 18 DEC 08 |
| | | 3.6-2 | 18 DEC 08 | 1.8-20 | 18 DEC 08 |
| | | | | 1.8-21 | 18 DEC 08 |

| <i>Page</i> | <i>Date</i> | <i>Page</i> | <i>Date</i> | <i>Page</i> | <i>Date</i> |
|--------------|-------------|--------------------------------|-------------|-------------|-------------|
| 1.8-22 | 18 DEC 08 | 3.3-1 | 18 DEC 08 | AD 2 | |
| 1.8-23 | 18 DEC 08 | 3.3-2 | 18 DEC 08 | 2.1-1 | 28 APR 16 |
| 1.8-24 | 18 DEC 08 | 3.4-1 | 18 DEC 08 | 2.1-2 | 28 APR 16 |
| 1.8-25 | 18 DEC 08 | 3.4-2 | 18 DEC 08 | 2.1-3 | 15 SEP 16 |
| 1.8-26 | 18 DEC 08 | 3.5-1 | 03 APR 14 | 2.1-4 | 15 SEP 16 |
| 1.8-27 | 18 DEC 08 | 3.5-2 | 03 APR 14 | 2.1-5 | 09 NOV 17 |
| 1.8-28 | 18 DEC 08 | 3.6-1 | 18 DEC 08 | 2.1-6 | 09 NOV 17 |
| 1.8-29 | 18 DEC 08 | 3.6-2 | 18 DEC 08 | 2.1-7 | 03 APR 14 |
| 1.8-30 | 18 DEC 08 | | | 2.1-8 | 03 APR 14 |
| 1.8-31 | 18 DEC 08 | ENR 4 | | 2.1-9 | 24 JUL 14 |
| 1.8-32 | 18 DEC 08 | 4.1-1 | 18 DEC 08 | 2.1-10 | 24 JUL 14 |
| 1.8-33 | 18 DEC 08 | 4.1-2 | 18 DEC 08 | 2.1-11 | 24 JUL 14 |
| 1.8-34 | 18 DEC 08 | 4.2-1 | 18 DEC 08 | 2.1-12 | 24 JUL 14 |
| 1.8-35 | 18 DEC 08 | 4.2-2 | 18 DEC 08 | 2.1-13 | 24 JUL 14 |
| 1.8-36 | 18 DEC 08 | 4.3-1 | 09 NOV 17 | 2.1-14 | 24 JUL 14 |
| 1.8-37 | 18 DEC 08 | 4.3-2 | 09 NOV 17 | 2.1-15 | 08 JAN 15 |
| 1.8-38 | 18 DEC 08 | 4.4-1 | 18 DEC 08 | 2.1-16 | 08 JAN 15 |
| 1.8-39 | 18 DEC 08 | 4.4-2 | 18 DEC 08 | 2.1-17 | 24 JUL 14 |
| 1.8-40 | 18 DEC 08 | ENR 5 | | 2.1-18 | 24 JUL 14 |
| 1.9-1 | 06 AUG 15 | 5.1-1 | 11 DEC 14 | 2.1-19 | 09 NOV 17 |
| 1.9-2 | 06 AUG 15 | 5.1-2 | 11 DEC 14 | 2.1-20 | 09 NOV 17 |
| 1.9-3 | 10 NOV 16 | 5.2-1 | 11 DEC 14 | 2.24.1.1-1 | 24 JUL 14 |
| 1.9-4 | 10 NOV 16 | 5.2-2 | 11 DEC 14 | 2.24.2.1-1 | 24 JUL 14 |
| 1.10-1 | 06 AUG 15 | 5.3-1 | 18 DEC 08 | 2.24.4.1-1 | 12 DEC 13 |
| 1.10-2 | 06 AUG 15 | 5.3-2 | 18 DEC 08 | 2.24.4.2-1 | 12 DEC 13 |
| 1.11-1 | 03 APR 14 | 5.4-1 | 18 DEC 08 | 2.24.5.1-1 | 13 JAN 11 |
| 1.11-2 | 03 APR 14 | 5.4-2 | 18 DEC 08 | 2.24.6.1-1 | 09 NOV 17 |
| 1.12-1 | 03 APR 14 | 5.5-1 | 11 DEC 14 | 2.24.6.1-2 | 09 NOV 17 |
| 1.12-2 | 03 APR 14 | 5.5-2 | 11 DEC 14 | 2.24.7.1-1 | 09 APR 09 |
| 1.12-3 | 18 DEC 08 | 5.6-1 | 18 DEC 08 | 2.24.7.1-2 | 09 APR 09 |
| 1.12-4 | 18 DEC 08 | 5.6-2 | 18 DEC 08 | 2.24.7.1-3 | 09 APR 09 |
| 1.13-1 | 18 DEC 08 | | | 2.24.7.1-4 | 09 APR 09 |
| 1.13-2 | 18 DEC 08 | | | 2.24.7.1-5 | 09 APR 09 |
| 1.14-1 | 18 DEC 08 | PART 3 - AERODROME (AD) | | 2.24.7.1-6 | 09 APR 09 |
| 1.14-2 | 18 DEC 08 | | | 2.24.7.1-7 | 09 APR 09 |
| 1.14-3 | 18 DEC 08 | AD 0 | | 2.24.7.1-8 | 09 APR 09 |
| 1.14-4 | 18 DEC 08 | 0.6-1 | 18 NOV 10 | 2.24.8.1-1 | 09 NOV 17 |
| 1.14-5 | 18 DEC 08 | 0.6-2 | 18 NOV 10 | 2.24.8.1-2 | 09 NOV 17 |
| 1.14-6 | 18 DEC 08 | | | 2.24.9.1-1 | 09 APR 09 |
| 1.14-7 | 18 DEC 08 | AD 1 | | 2.24.9.1-2 | 09 APR 09 |
| 1.14-8 | 18 DEC 08 | 1.1-1 | 01 NOV 12 | 2.24.9.1-3 | 09 APR 09 |
| | | 1.1-2 | 01 NOV 12 | 2.24.9.1-4 | 09 APR 09 |
| ENR 2 | | 1.1-3 | 02 DEC 10 | 2.24.9.1-5 | 09 APR 09 |
| 2.1-1 | 09 NOV 17 | 1.1-4 | 02 DEC 10 | 2.24.9.1-6 | 09 APR 09 |
| 2.1-2 | 09 NOV 17 | 1.2-1 | 16 APR 15 | 2.24.9.1-7 | 09 APR 09 |
| 2.1-3 | 09 NOV 17 | 1.2-2 | 16 APR 15 | 2.24.9.1-8 | 09 APR 09 |
| 2.1-4 | 09 NOV 17 | 1.2-3 | 23 APR 09 | 2.24.10.1-1 | 18 NOV 10 |
| 2.2-1 | 18 DEC 08 | 1.2-4 | 23 APR 09 | 2.24.10.1-2 | 18 NOV 10 |
| 2.2-2 | 18 DEC 08 | 1.3-1 | 18 DEC 08 | 2.24.10.1-3 | 09 APR 09 |
| | | 1.3-2 | 18 DEC 08 | 2.24.10.1-4 | 09 APR 09 |
| ENR 3 | | 1.3-3 | 10 NOV 16 | 2.24.13.1-1 | 11 DEC 14 |
| 3.1-1 | 18 DEC 08 | 1.3-4 | 10 NOV 16 | 2.24.13.1-2 | 11 DEC 14 |
| 3.1-2 | 18 DEC 08 | 1.4-1 | 18 DEC 08 | | |
| 3.2-1 | 03 APR 14 | 1.4-2 | 18 DEC 08 | | |
| 3.2-2 | 03 APR 14 | | | | |

ENR 2. AIR TRAFFIC SERVICES AIRSPACE

ENR 2.1 FIR, CTA, TMA

| <i>Name</i> <i>Lateral limits</i> <i>Vertical limits</i> <i>Class of airspace</i> | <i>Unit Providing service</i> | <i>Call sign</i> <i>Languages</i> <i>Area and condition of use</i> <i>Hours of service</i> | <i>Frequency/purpose</i> | <i>Remarks</i> |
|--|-----------------------------------|---|--|---|
| 1 | 2 | 3 | 4 | 5 |
| FIR PRISTINA Covers the entire territory of the Republic of Kosovo FL 205 / GND Class of airspace: D,G | Pristina Approach | Pristina Approach ENG Mon -Sun: H24 | 118.775 119.175 228.125 250.000 | <i>The airspace above FL205 is controled by HungaroControl.</i> <i>Ref. Kosovo AIP GEN 1.2.1</i> |
| | | | | |

| <i>Name</i> <i>Lateral limits</i> <i>Vertical limits</i> <i>Class of airspace</i> | <i>Unit Providing service</i> | <i>Call sign</i> <i>Languages</i> <i>Area and condition of use</i> <i>Hours of service</i> | <i>Frequency/purpose</i> | <i>Remarks</i> |
|---|-------------------------------|---|---|---|
| 1 | 2 | 3 | 4 | 5 |
| <p>PRISTINA CTA Zone 1: Line joining the points: 42°44'57.511"N 020°54'15.611"E 42°45'36.057"N 021°05'45.900"E 42°41'14.697"N 021°06'12.347"E</p> <p>ARC 7.5 Nm centered on 42°34'22.000"N 021°02'09.000"E Clockwise</p> <p>42°28'00.666"N 021°07'32.356"E 42°23'39.287"N 021°07'58.516"E 42°23'00.930"N 020°56'32.226"E 42°30'24.300"N 020°55'46.423"E 42°31'59.457"N 020°58'19.351"E 42°36'10.938"N 020°57'53.433"E 42°37'23.440"N 020°55'02.929"E</p> <p style="text-align: center;">9500 ft AMSL 3500 ft AMSL</p> <p>Class of airspace: D</p> | <p>Pristina Approach</p> | <p>Pristina Approach</p> <p>ENG</p> <p>Mon -Sun: H24</p> | <p>118.775 119.175 228.125 250.000</p> | <p><i>The airspace above FL205 is controlled by HungaroControl.</i></p> <p><i>Ref. Kosovo AIP GEN 1.2.1</i></p> |
| <p>PRISTINA CTA Zone 2: Line joining the points: 42°44'57.511"N 020°54'15.611"E 42°45'36.057"N 021°05'45.900"E 42°41'14.697"N 021°06'12.347"E</p> <p>ARC 7.5 Nm centered on 42°34'22.000"N 021°02'09.000"E Clockwise</p> <p>42°28'00.666"N 021°07'32.356"E 42°23'39.287"N 021°07'58.516"E 42°24'16.469"N 021°19'24.988"E 42°53'12.502"N 021°16'35.118"E 42°51'23.696"N 020°44'02.470"E 42°22'28.518"N 020°47'07.267"E 42°23'00.930"N 020°56'32.226"E 42°30'24.300"N 020°55'46.423"E 42°31'59.457"N 020°58'19.351"E 42°36'10.938"N 020°57'53.433"E 42°37'23.440"N 020°55'02.929"E</p> <p style="text-align: center;">9500 ft AMSL 5000 ft AMSL</p> <p>Class of airspace: D</p> | <p>Pristina Approach</p> | <p>Pristina Approach</p> <p>ENG</p> <p>Mon -Sun: H24</p> | <p>118.775 119.175 228.125 250.000</p> | <p><i>The airspace above FL205 is controlled by HungaroControl.</i></p> <p><i>Ref. Kosovo AIP GEN 1.2.1</i></p> |
| | | | | |

| <i>Name</i> <i>Lateral limits</i> <i>Vertical limits</i> <i>Class of airspace</i> | <i>Unit Providing service</i> | <i>Call sign</i> <i>Languages</i> <i>Area and condition of use</i> <i>Hours of service</i> | <i>Frequency/purpose</i> | <i>Remarks</i> |
|---|-------------------------------|---|--|---|
| 1 | 2 | 3 | 4 | 5 |
| <p><u>PRISTINA CTR</u> Line joining the points: 42°44'57.511"N 020°54'15.611"E 42°45'36.057"N 021°05'45.900"E 42°41'14.697"N 021°06'12.347"E</p> <p>ARC 7.5 Nm centered on 42°34'22.000"N 021°02'09.000"E Clockwise</p> <p>42°28'00.666"N 021°07'32.356"E 42°23'39.287"N 021°07'58.516"E 42°23'00.930"N 020°56'32.226"E 42°30'24.300"N 020°55'46.423"E 42°31'59.457"N 020°58'19.351"E 42°36'10.938"N 020°57'53.433"E 42°37'23.440"N 020°55'02.929"E</p> <p style="text-align: center;"><u>3500 ft AMSL</u> GND</p> <p>Class of airspace: D</p> | <p>Pristina Tower</p> | <p>Pristina Tower</p> <p>ENG</p> <p>Mon -Sun: H24</p> | <p>120.125 122.100 227.800</p> | <p><i>The airspace above FL205 is controlled by HungaroControl.</i></p> <p><i>Ref. Kosovo AIP GEN 1.2.1</i></p> |
| | | | | |

ENR 4.3 NAME-CODE DESIGNATORS FOR SIGNIFICANT POINTS

| <i>Name-code designator</i> | <i>Coordinates</i> | |
|-----------------------------|--------------------|---------------|
| 1 | 2 | |
| LONTA | 42°09'34.0"N | 021°23'50.0"E |
| SARAX | 42°05'47.9"N | 020°53'41.9"E |
| XAXAN | 42°08'12.9"N | 021°19'36.7"E |
| KOGAT | 42°06'45.0"N | 021°23'50.0"E |
| MEDUX | 42°44'53.8"N | 020°01'18.1"E |
| DOLEV | 42°50'00.7"N | 020°18'42.9"E |

INTENTIONALLY LEFT BLANK

BKPR AD 2.12 RUNWAY PHYSICAL CHARACTERISTICS

| <i>Designation RWY NR</i> | <i>TRUE BRG</i> | <i>Dimensions of RWY (m)</i> | <i>Strength (PCN and surface of RWY and SWY</i> | <i>THR coordinates</i> | <i>THR elevation and highest elevation of TDZ of precision APP RWY</i> |
|-----------------------------------|-----------------|----------------------------------|---|--|--|
| 1 | 2 | 3 | 4 | 5 | 6 |
| 17 | 176° GEO | 2501 x 45 | PCN 100/F/B/X/T Asphalt | 42° 35' 07.00479"N 21° 02' 04.58350"E | 1789 ft (545.25m) |
| 35 | 356° GEO | 2501 x 45 | PCN 100/F/B/X/T Asphalt | 42° 33' 46.58066"N 21° 02' 12.77821"E | 1786 ft (544.25m) |

| <i>Slope of RWY - SWY</i> | <i>SWY dimensions</i> | <i>CWY dimensions (m)</i> | <i>Strip dimensions (m)</i> | <i>OFZ</i> | <i>Remarks</i> |
|-------------------------------|---------------------------|-------------------------------|---------------------------------|------------|----------------|
| 7 | 8 | 9 | 10 | 11 | 12 |
| 17 - Slope 0,04% down | Not present | Not present | 2621 x 300 | | |

BKPR AD 2.13 DECLARED DISTANCES

| <i>Runway designator</i> | <i>TORA (m)</i> | <i>TODA (m)</i> | <i>ASDA (m)</i> | <i>LDA (m)</i> | <i>Remarks</i> |
|--------------------------|---------------------|---------------------|---------------------|--------------------|----------------|
| 1 | 2 | 3 | 4 | 5 | 6 |
| 17 | 2501 | 2501 | 2501 | 2501 | |
| 35 | 2501 | 2501 | 2501 | 2501 | |

BKPR AD 2.14 APPROACH AND RUNWAY LIGHTING

| <i>RWY Designator</i> | <i>APCH LGT Type, LEN, INTST</i> | <i>THR LGT Colour</i> | <i>VASIS (MEHT) PAPI</i> | <i>TDZ LGT LEN</i> | <i>RWY Centre Line LGT LEN, spacing, colour, INTST</i> | <i>RWY Edge LGT LEN, spacing, colour, INTST</i> | <i>RWY End LGT Colour,</i> | <i>SWY LGT LEN (m) Colour</i> |
|---------------------------|--|---|---------------------------------------|----------------------------|--|---|--|---|
| 1 | 2 | 3 | 4 | 5 | 6 | 7 | 8 | 9 |
| 17 | Calvert 900 m HIL | Green | PAPI GP 3° 1 000 ft from THR | 900m | 30 m White and last 600 m on both sides Yellow | White HIL UNI every 60 m Last 600m Yellow White LIL OMNI every 60 m | Red | |
| 35 | Calvert 900 m HIL | Green | PAPI GP 3° 1000 ft from THR | NIL | 30 m White and last 600 m on both sides Yellow | White HIL UNI every 60 m Last 600m Yellow White LIL OMNI every 60 m | Red | |
| 10 | Remarks | APP 17 ASR are 300m. TDZ for CAT II only for RWY 17. RGL/RHP with independent supply and control. RCL lights are installed form 17-35. | | | | | | |

BKPR AD 2.15 OTHER LIGHTING SECONDARY POWER SUPPLY

| | | |
|---|---|--|
| 1 | <i>ABN/IBN location, characteristics and hours of operation</i> | ABN: At TWR building FLG W/G, 12 RPM, 24 FLG/MIN IBN/NIL HN+IMC |
| 2 | <i>LDI location and LGT</i> <i>Anemometer location and LGT</i> | LDI - NIL WDI available (See AD Chart) Anemometer location: 21°01'59.671"E 42°34'53.964" Lighted |
| 3 | <i>TWY edge and centre line lighting</i> | Edge: all TWY Centreline: TWY B1, B2 and B3 |
| 4 | <i>Secondary power supply/switch-over time</i> | Secondary/backup power supply available to all lighting at AD. Switch-over time less than 1 sec for all CAT II facilities, others within 15 sec. |
| 5 | <i>Remarks</i> | |

BKPR AD 2.16 HELICOPTER LANDING AREA

| | | |
|---|---|---|
| 1 | <i>Coordinates TLOF or THR of FATO</i> | Nil |
| 2 | <i>TLOF and/or FATO elevation m/ft</i> | Nil |
| 3 | <i>TLOF and FATO area dimensions, surface, strength marking</i> | Nil |
| 4 | <i>True and MAG BRG of FATO</i> | Nil |
| 5 | <i>Declared distance available</i> | Nil |
| 6 | <i>APP and FATO lighting</i> | Nil |
| 7 | <i>Remarks</i> | Helicopters landing with PPR 24 hours to Base OPS only. Helicopters shall land in accordance with ATC instruction. Presence of Military/UN helicopters on the taxiways. |

BKPR AD 2.17 ATS AIRSPACE

| | | |
|---|---|---|
| 1 | <i>Designation and lateral limits</i> | PRISTINA CTR 42°44'57.511"N 020°54'15.611"E 42°45'36.057"N 021°05'45.900"E 42°41'14.697"N 021°06'12.347"E ARC 7.5 Nm centered on 42°34'22.000"N 021°02'09.000"E Clockwise 42°28'00.666"N 021°07'32.356"E 42°23'39.287"N 021°07'58.516"E 42°23'00.930"N 020°56'32.226"E 42°30'24.300"N 020°55'46.423"E 42°31'59.457"N 020°58'19.351"E 42°36'10.938"N 020°57'53.433"E 42°37'23.440"N 020°55'02.929"E |
| 2 | <i>Vertical limits</i> | GND to 3 500 ft AMSL |
| 3 | <i>Airspace classification</i> | D |
| 4 | <i>ATS unit call sign</i> <i>Language(s)</i> | Pristina Tower English |
| 5 | <i>Transition altitude</i> | 10 000 ft AMSL |
| 6 | <i>Remarks</i> | Nil |

BKPR AD 2.24 CHARTS RELATED TO THE AERODROME**WARNING**

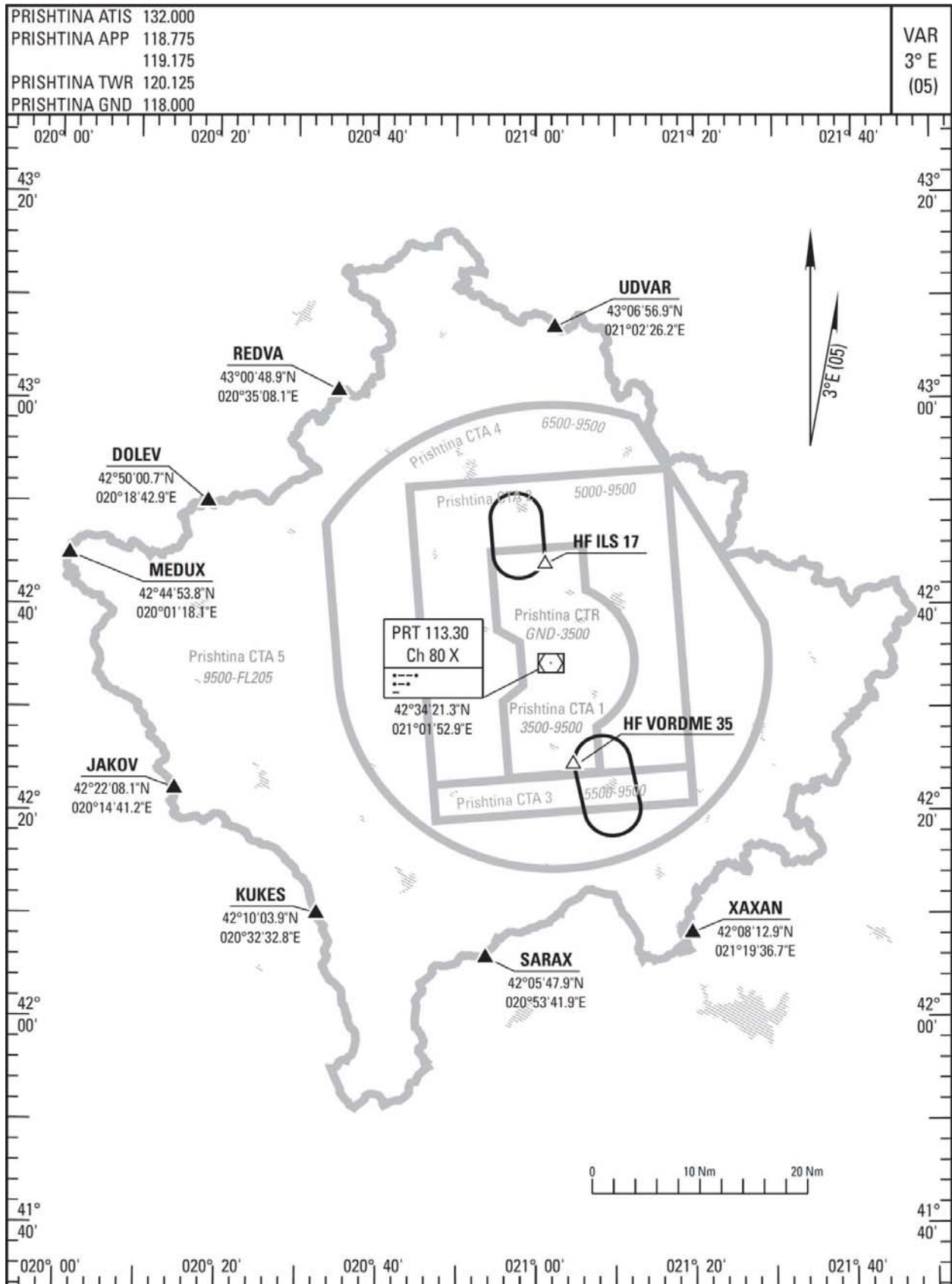
**INSTRUMENT FLIGHT PROCEDURES ARE PRODUCED IN
NON-INTERNATIONAL METRIC UNITS (NON-DI UNNITS)**

| | |
|---|---------------------|
| Aerodrome, Heliport Chart - ICAO | BKPR AD 2.24.1.1-1 |
| Aircraft Parking/Docking Chart - ICAO | BKPR AD 2.24.2.1-1 |
| Aerodrome Obstacle Chart - ICAO Type A | BKPR AD 2.24.4.1-1 |
| Aerodrome Obstacle Chart - ICAO Type B | BKPR AD 2.24.4.2-1 |
| Precision Approach Terrain Chart - ICAO | BKPR AD 2.24.5.1-1 |
| Kosovo Airspace | BKPR AD 2.24.6.1-1 |
| Instrument Departure Chart SID SARAX 1A - XAXAN 1A ATC DISCR (RWY 17) | BKPR AD 2.24.7.1-1 |
| Initial Climb 2A (RWY 17) - SIDs SARAX 2A - XAXAN 2A ATC DISCR. | BKPR AD 2.24.7.1-2 |
| Instrument Departure Chart SID SARAX 1B - XAXAN 1B ATC DISCR (RWY 35) | BKPR AD 2.24.7.1-3 |
| Initial Climb 2B (RWY 35) - SIDs SARAX 2B - XAXAN 2B ATC DISCR. | BKPR AD 2.24.7.1-4 |
| Instrument Departure Chart SID BLACE 1A (RWY 17) | BKPR AD 2.24.7.1-5 |
| Initial Climb 2A (RWY 17) - SID BLACE 2A | BKPR AD 2.24.7.1-6 |
| Instrument Departure Chart SID BLACE 1B (RWY 35) | BKPR AD 2.24.7.1-7 |
| Initial Climb 2B (RWY 35) - SID BLACE 2B | BKPR AD 2.24.7.1-8 |
| ATC Surveillance Minimum Altitude Chart | BKPR AD 2.24.8.1-1 |
| STARs XAXAN 17A - XAXAN 17B | BKPR AD 2.24.9.1-1 |
| STARs BLACE 17A - BLACE 17B | BKPR AD 2.24.9.1-2 |
| STARs XAXAN 35A - XAXAN 35B | BKPR AD 2.24.9.1-3 |
| STARs BLACE 35A - BLACE 35B | BKPR AD 2.24.9.1-4 |
| STARs EAST 17A - EAST 17B | BKPR AD 2.24.9.1-5 |
| STARs EAST 35A - EAST 35B | BKPR AD 2.24.9.1-6 |
| STARs BLACE EAST - XAXAN EAST | BKPR AD 2.24.9.1-7 |
| Instrument Approach Chart VOR/DME 17 | BKPR AD 2.24.10.1-1 |
| Instrument Approach Chart ILS/DME PRS RWY 17 | BKPR AD 2.24.10.1-2 |
| Instrument Approach Chart VOR/DME P RWY 35 | BKPR AD 2.24.10.1-3 |
| Instrument Approach Chart VOR/DME S RWY 35 | BKPR AD 2.24.10.1-4 |
| Kosovo Restricted Areas | BKPR AD 2.24.13.1-1 |

INTENTIONALLY LEFT BLANK

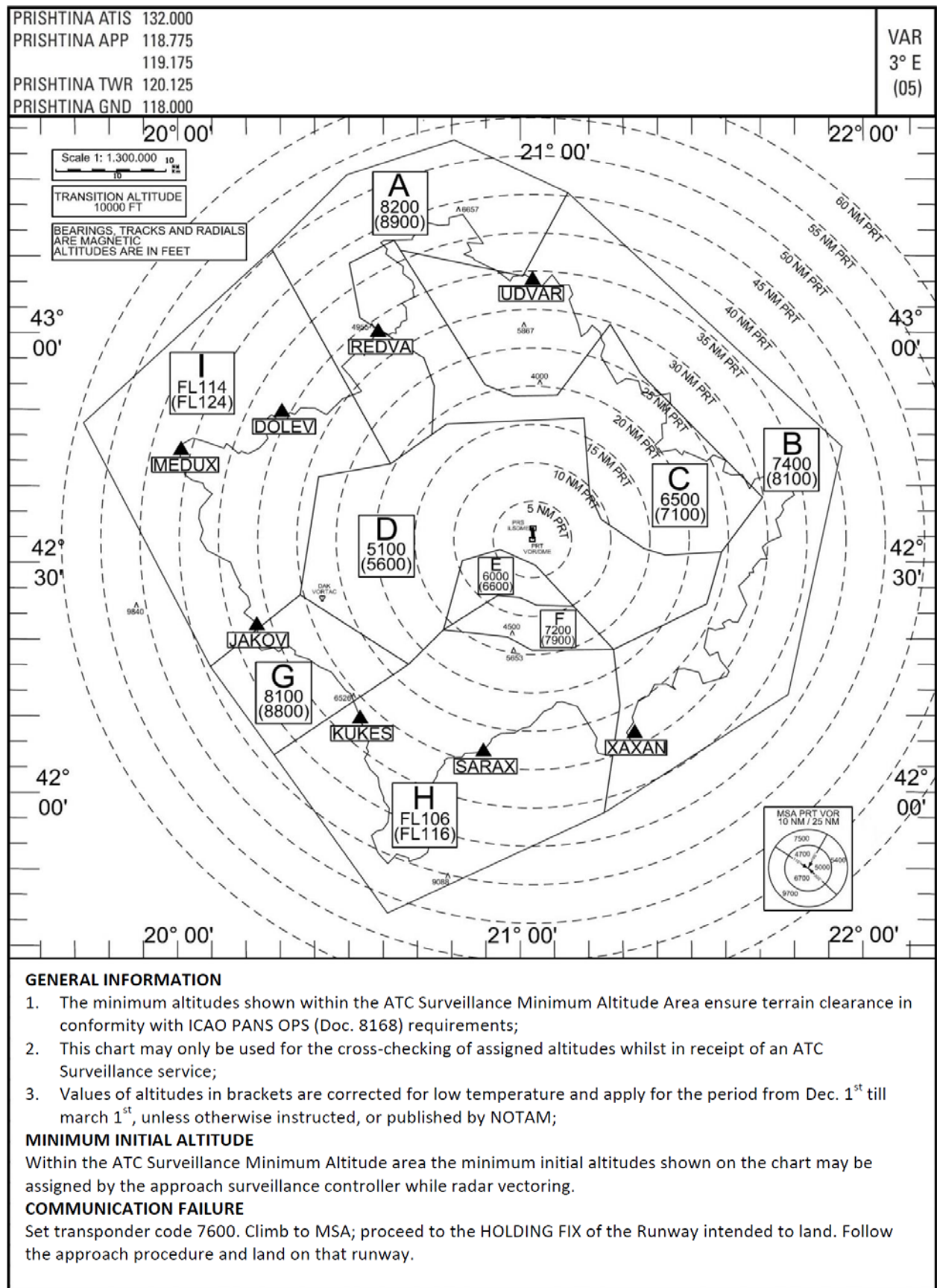
AREA CHART - ICAO

KOSOVO AIRSPACE



INTENTIONALLY LEFT BLANK

ATC SURVEILLANCE MINIMUM ALTITUDE CHART



INTENTIONALLY LEFT BLANK