

TEL: +381 38 59 58 230
FAX: +381 38 59 58 230
AFTN: BKPRZPZX
E-mail: ais@airportpristina.com

AIP KOSOVO

Aeronautical Information Service
Pristina International Airport
Vrellë-Lipjan

AIP
AIRAC
AMDT
08/2012

Publication date: 14 JUN 2012

Effective date: 26 JUL 2012

1. Insert the following new page

Remove the following old page

BKPR AD 2.24.2.1-1 26 JUL 12

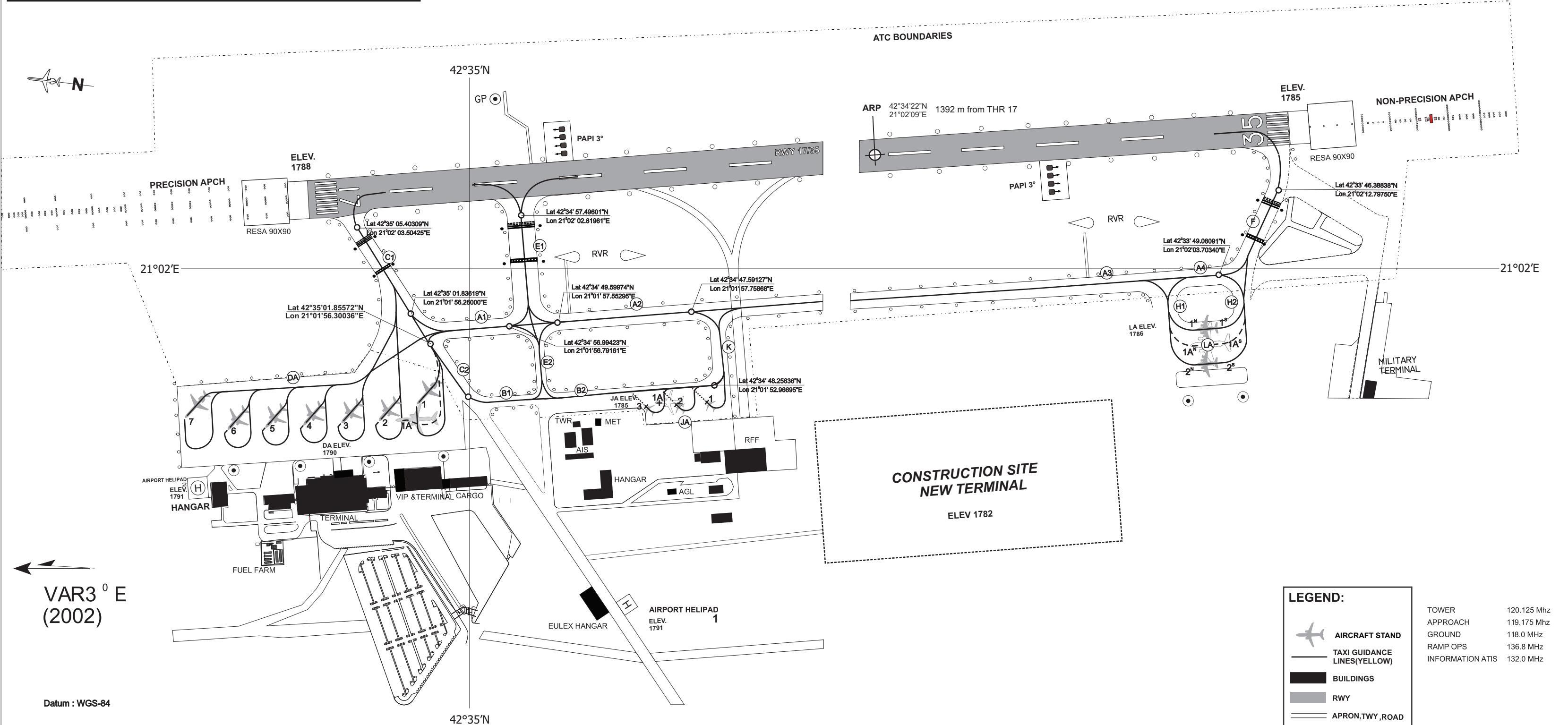
BKPR AD 2.24.2.1-1 13 JAN 11

2. Please record entry of Amendment on page GEN 0.2-1

AIRCRAFT PARKING/DOCKING CHART-ICAO

ARP: 42°34'22"N 21°02'09"E 1392m from THR 17	ADELEV. 1788	ELEV in FT Dimensions /Distances in M	TWR ELEV.	1842	TERMINAL ELEV.	1814	FLOODLIGHTS ELEV.	1871	HELIPAD 1&2 ELEV.	1791
---	--------------	--	--------------	------	-------------------	------	----------------------	------	----------------------	------

PRISHTINA



VAR 3° E
(2002)

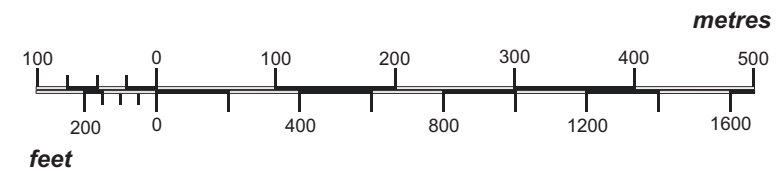
Datum : WGS-84

LEGEND:

- AIRCRAFT STAND
- TAXI GUIDANCE LINES(YELLOW)
- BUILDINGS
- RWY
- APRON, TWY, ROAD
- ATC BOUNDARIES
- HOLDING POSITION
- STOP BARS

- TOWER 120.125 Mhz
- APPROACH 119.175 Mhz
- GROUND 118.0 Mhz
- RAMP OPS 136.8 Mhz
- INFORMATION ATIS 132.0 Mhz

SCALE 1:50 00



	INS COORDINATES FOR AIRCRAFT STANDS			DOCKING POSITION	
	Nr.	Latitude NORTH	Longitude EAST	Wingspan max.	Length max.
DELTA APRON Width Length Pavement strength PCN 118 390 70 F/B/X/T	1	42°35' 01.832"N	21° 01' 51.925"E	34.1 M	44.6 M
	2	42°35' 03.600"N	21° 01' 50.843"E	34.5 M	39.5 M
	3	42°35' 05.364"N	21° 01' 50.673"E	34.5 M	39.5 M
	4	42°35' 07.126"N	21° 01' 50.501"E	34.5 M	39.5 M
	5	42°35' 08.892"N	21° 01' 50.326"E	34.5 M	39.5 M
	6	42°35' 10.655"N	21° 01' 50.151"E	34.5 M	39.5 M
	7	42°35' 12.691"N	21° 01' 50.896"E	34.1 M	44.6 M
	1A	42°35' 02.445"N	21° 01' 51.083"E	73.3 M	69.1 M
LIMA APRON Width Length Pavement strength PCN 66 126 65 R/C/W/T	1	42°35' 50.764"N	21° 02' 00.282"E	40.4 M	30.3 M
	2	42°35' 50.654"N	21° 01' 58.337"E	40.4 M	30.3 M
	1A	42°35' 50.808"N	21° 01' 59.330"E	51.8 M	53.0 M
	OR				
JULIET APRON Width Length Pavement strength PCN 52 100 70 F/B/X/T	1	42°33' 49.837"N	21° 02' 00.379"E	40.4 M	30.3 M
	2	42°33' 49.727"N	21° 01' 58.431"E	40.4 M	30.3 M
	1A	42°33' 49.687"N	21° 01' 59.449"E	51.8 M	53.0 M
	1	42°34' 49.024"N	21° 01' 51.923"E	23.0 M	19.0 M
2	42°34' 50.392"N	21° 01' 51.784"E	23.0 M	19.0 M	
3	42°34' 51.755"N	21° 01' 51.650"E	23.0 M	19.0 M	
1A	42°34' 51.251"N	21° 01' 51.857"E	40.4 M	30.3 M	

CLEARANCE DISTANCES ON AIRCRAFT STANDS	
DELTA APRON, -STAND 1,2,3,4,5,6,7 -CODE A,B,C -STAND 1A-CODE D	
JULIET APRON, -STAND 1,2,3 -CODE A,B -STAND 1A -CODE C	
LIMA APRON, -STAND 1,2 -CODE C -STAND 1A -CODE D	

TAXIWAYS				
TWY Name	Width M	Length M	Pavement strength PCN	Day marking
Alpha 1	23	100	70 F/B/X/T	
Alpha 2	23	300	70 F/B/X/T	
Alpha 3	23	1750	70 F/B/X/T	
Alpha 4	23	100	70 F/B/X/T	
Bravo 1	15	60	70 F/B/X/T	
Bravo 2	23	130	70 F/B/X/T	
Charlie 1	23	200	70 F/B/X/T	
Charlie 2	15	140	70 F/B/X/T	
Echo 1	23	185	70 F/B/X/T	
Echo 2	15	110	70 F/B/X/T	
Foxtrot	23	155	70 F/B/X/T	
Hotel 1	23	50	65 F/B/X/T	
Hotel 2	23	50	65 F/B/X/T	
Kilo	15	90	70 F/B/X/T	

RUNWAYS							
NR	ELEVATION	THR	Pavement strength	Day marking	Declared distances		
					TORA	TODA	ASDA LDA
17	1788	42°35' 07.00479"N 21° 02' 04.58350"E	PCN100/F/B/X/T	THR RWY NR TDZ Aiming Center line Side strips	2501	2501	2501 2501
35	1785	42°33' 46.58068"N 21° 02' 12.77821"E			2501	2501	2501 2501

DE-ICING IN ALL POSITIONS
IN ORDER TO MEET THE REQUIREMENT FOR WING-TIP-CLEARANCE FOLLOW STRICTLY THE YELLOW TAXI GUIDANCE LINE
WAIT FOR MARSHALLER BEFORE ENTERING TAXILANE FOR ALL POSITIONS ON THE DELTA APRON